



## 35 PENTHOUSE DUPLEX ST GEORGE TERRACE

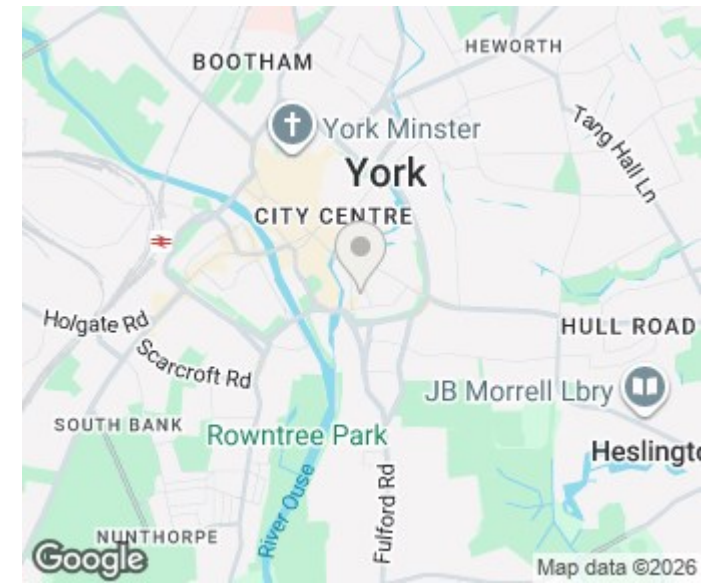
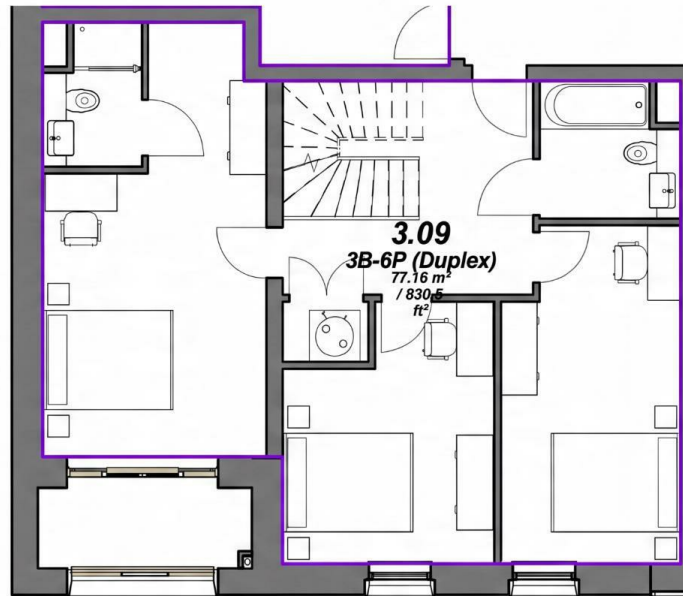
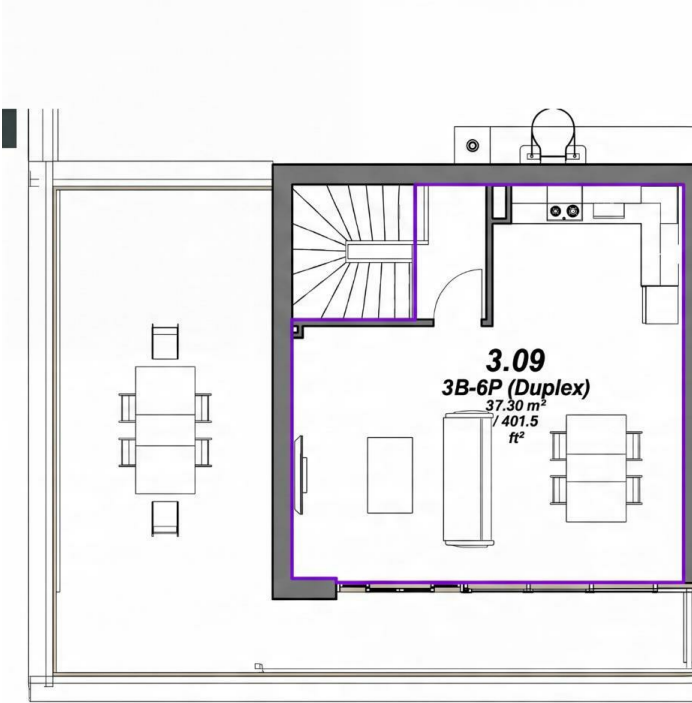
YORK, YO1 9PY

£750,000  
LEASEHOLD

A rare opportunity to acquire an exceptional three-bedroom duplex apartment extending to 1,662 sq ft within the exclusive St. George's Terrace development. Combining contemporary design, luxurious finishes and a private terrace, this beautifully crafted home offers spacious open-plan living, three generous double bedrooms and premium specification throughout, all set within a boutique collection of just 35 residences in the very heart of York.

MONROE

SELLERS OF THE FINEST HOMES



Agents Note: Whilst every care has been taken to prepare these particulars, they are for guidance purposes only. All measurements are approximate and are for general guidance purposes only and whilst every care has been taken to ensure their accuracy, they should not be relied upon and potential buyers/tenants are advised to recheck the measurements

Land & New Homes  
 1-3 The Avenue  
 Alwoodley  
 Leeds  
 West Yorkshire  
 LS17 7BD

0113 350 1444  
 landandnewhomes@monroestateagents.com  
 www.monroestateagents.com

MONROE

SELLERS OF THE FINEST HOMES